

16421 SCIENTIFIC WAY



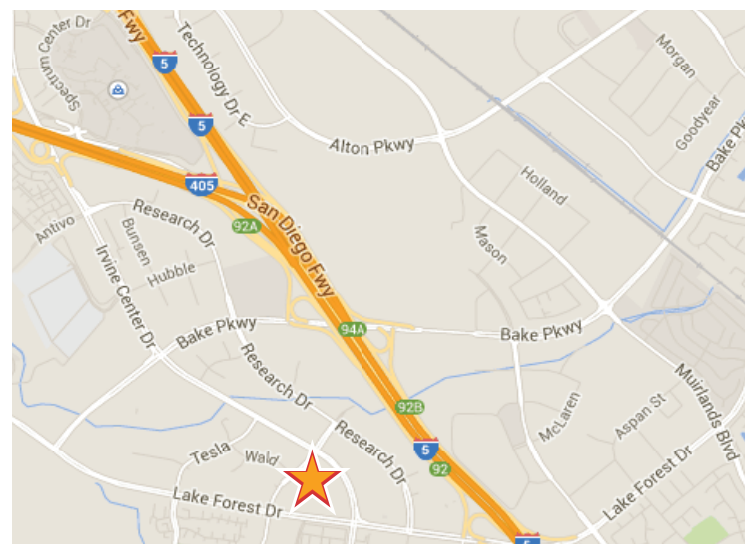
FOR LEASE - 9,920 SF - \$2.45 FSG

PROPERTY FEATURES

- Bacchus Signature Series
- 5.4 Design Professional Zoning
- 9,920 Square Feet For Lease - \$2.45 FSG
- Divisible By 4,960 Square Feet
- Upgraded, Creative Finishes
- Polished Concrete Floors & Open Ceiling Areas
- Highly Visible Corner Location & Building Top Signage
- Free Surface Parking
- Flexible Lease Terms, Long Term Ownership
- Immediate Access To The 5 and 405 Freeways
- Close Proximity to the Irvine Spectrum Entertainment Center, Los Olivos Marketplace, Lake Forest Gateway



Click To See A 360 View



For Further
Information,
Please Contact:

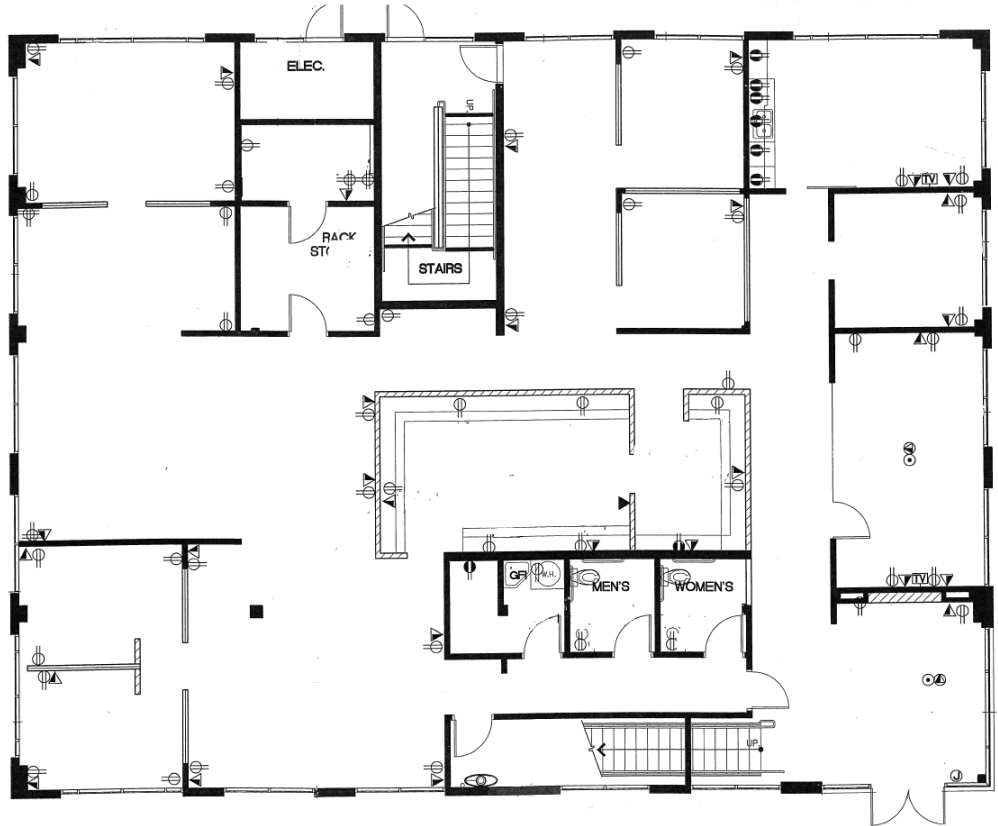
Rich Essen
949.721.6021
riche@oppre.com
lic. 008822024



lic. 01446792

16421 SCIENTIFIC WAY

FIRST FLOOR



SECOND FLOOR



For Further Information, Please Contact:

Rich Essen
949.721.6021
riche@oppre.com
lic. 008822024



No warranty or representation, expressed or implied, is made as to the accuracy of the information contained herein, and same is submitted subject to errors, omissions, change of price, rental or other conditions, withdrawal without notice, and to any special listing conditions, imposed by our principals.